

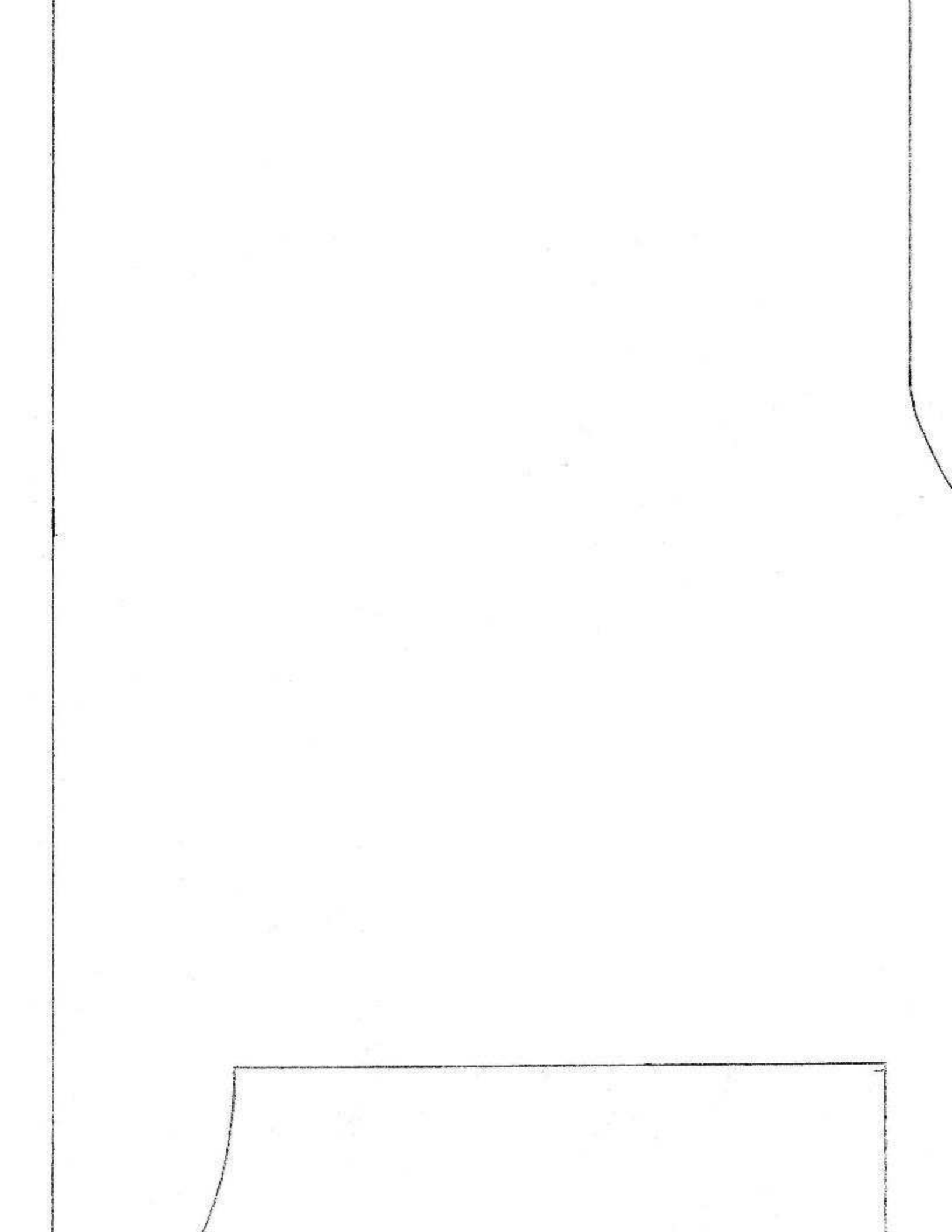


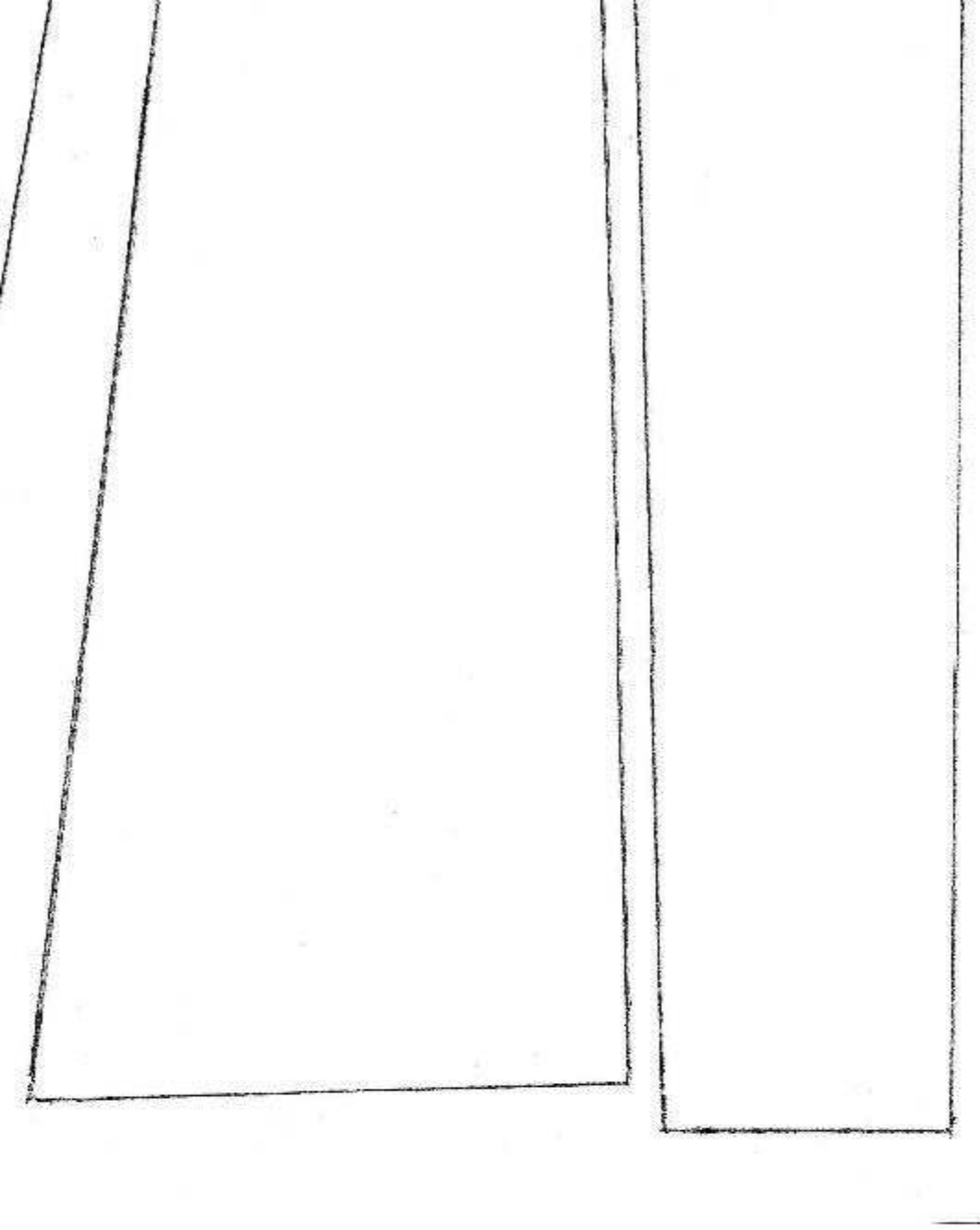
Vertical stav.  
Cut 1

The diagram shows a technical drawing of a fuselage section. A large, irregular polygonal shape is defined by solid lines. A diagonal line, labeled 'Vertical stav. Cut 1', divides the shape into two parts. To the right of this main shape, there is a smaller, more complex shape with several rectangular notches and a curved bottom edge. This shape is labeled 'Fuselage cut 2'. At the bottom of the diagram, there is a rectangular section labeled 'Fuselage cut 1'. The drawing is a black and white line drawing on a white background.

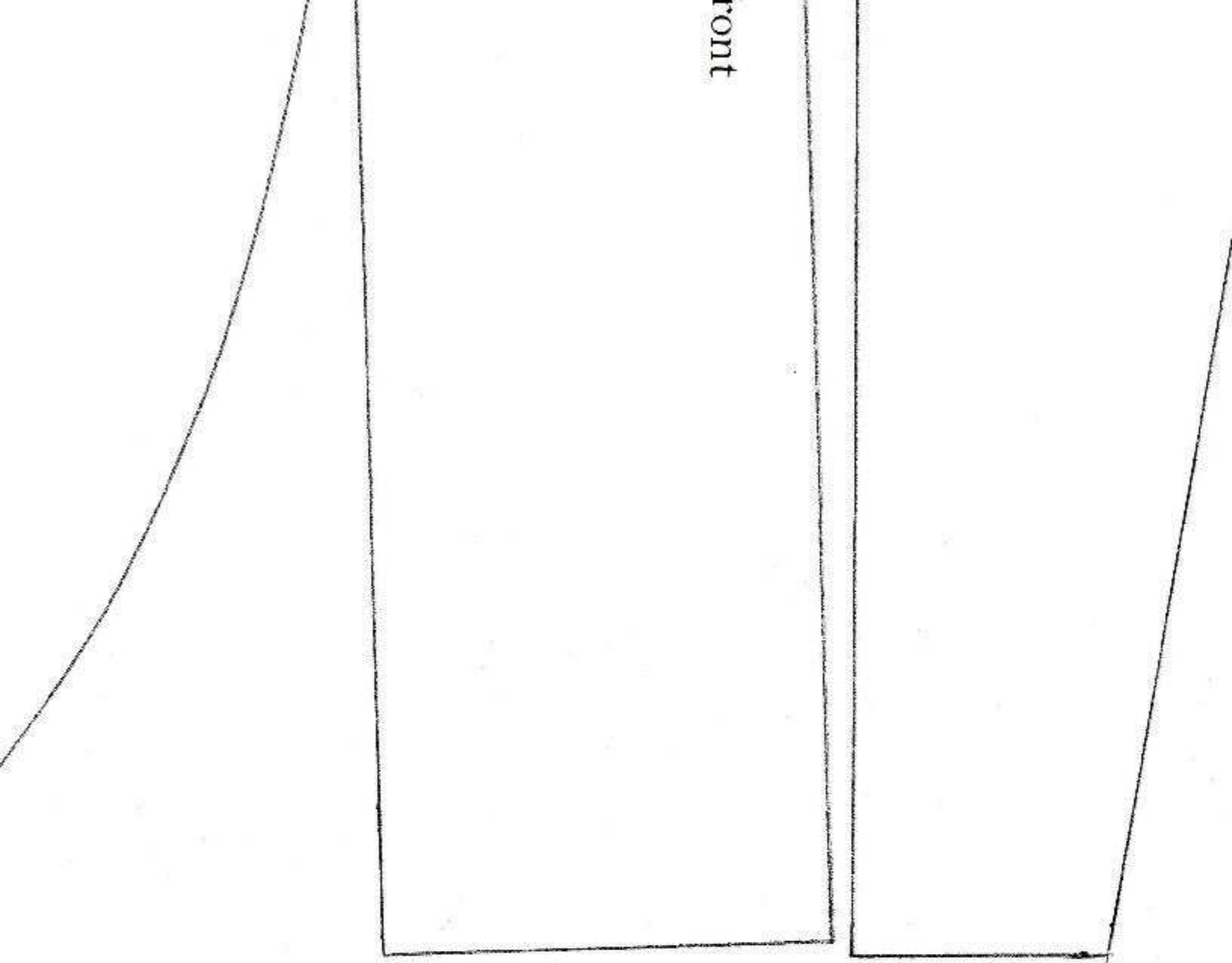
Fuselage  
cut 2

Fuselage  
cut 1





front







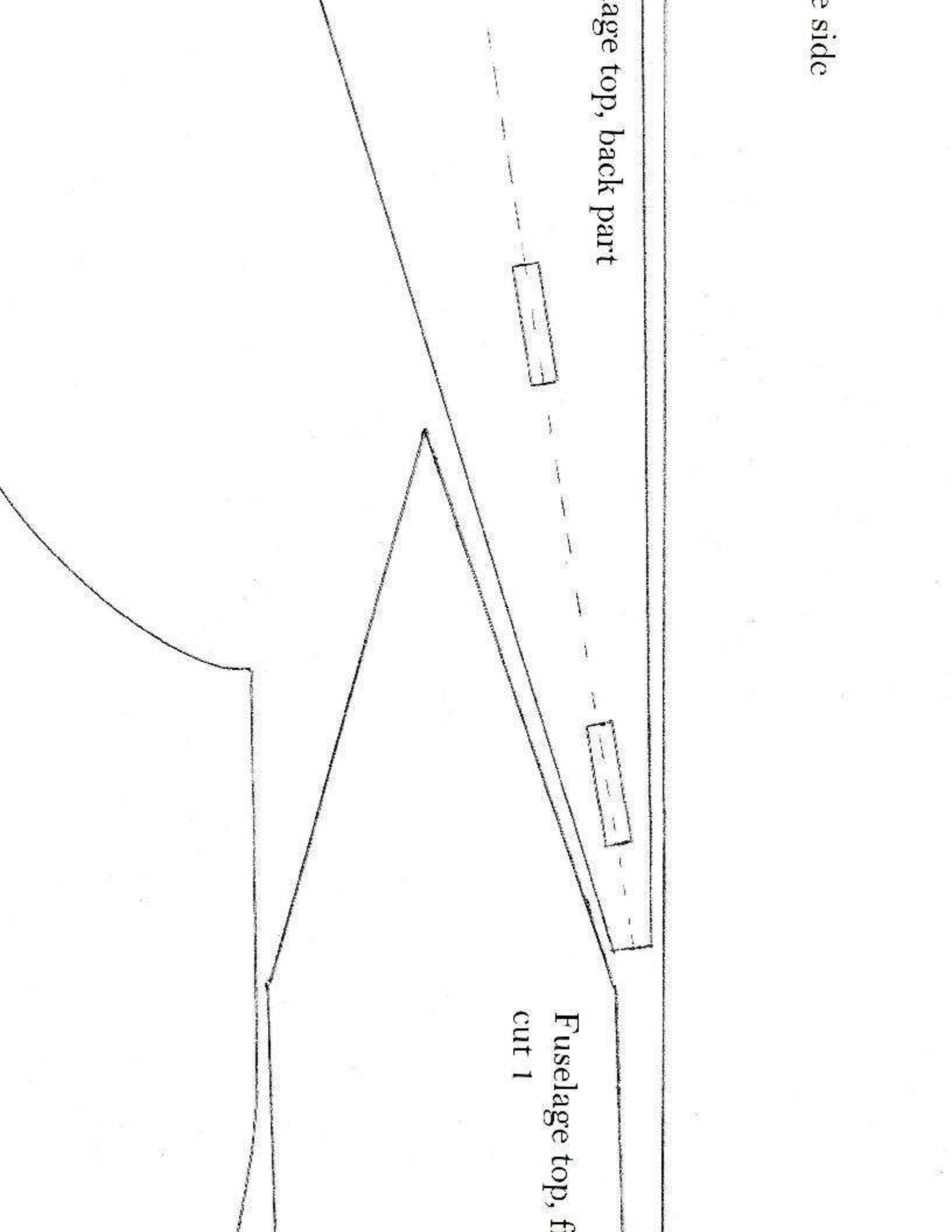
Float side  
cut 2

e side

age top, back part



Fuselage top, F  
cut 1





Float  
cut 2

Float bottom  
cut 2

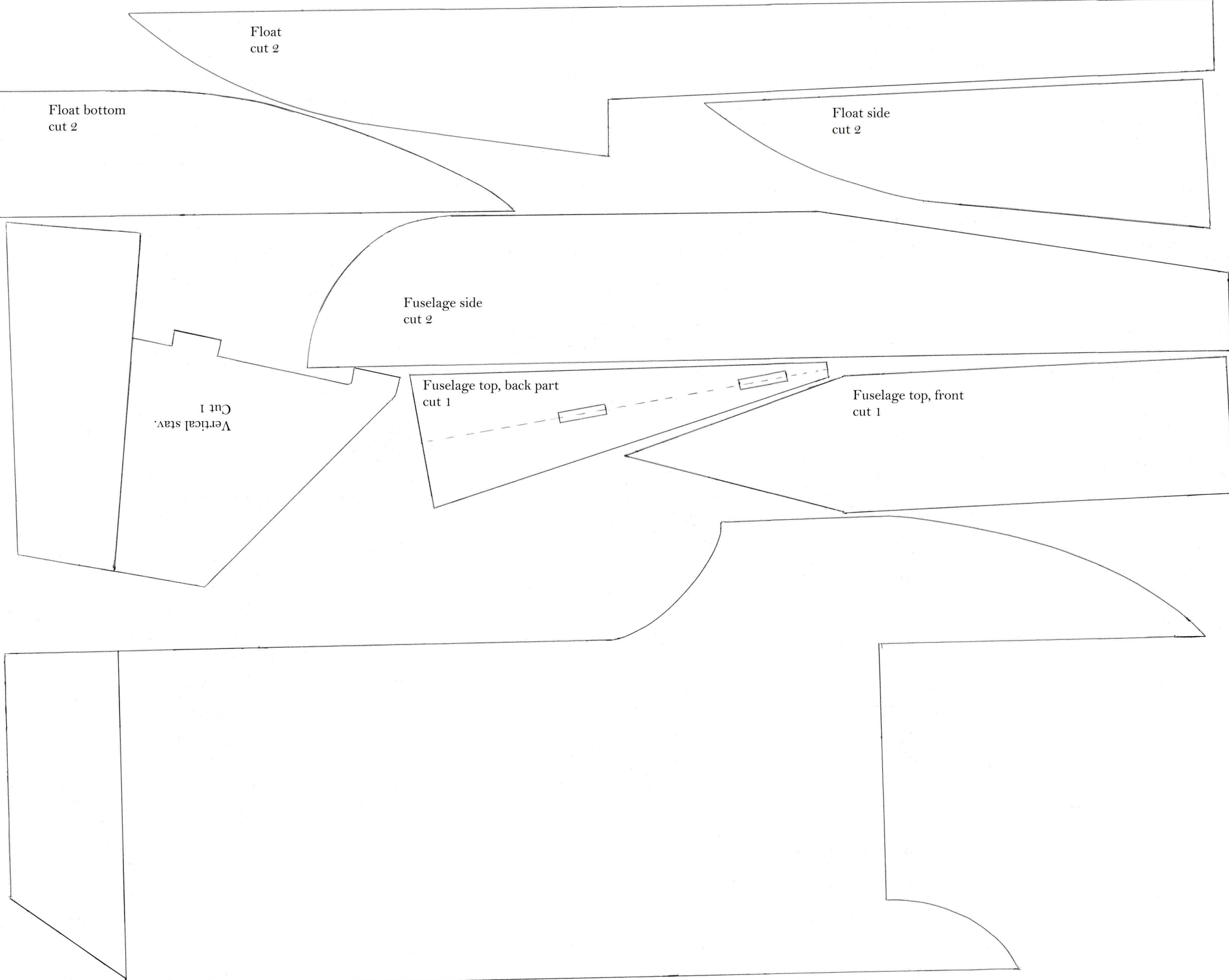
Float side  
cut 2

Fuselage side  
cut 2

Vertical stav.  
Cut 1

Fuselage top, back part  
cut 1

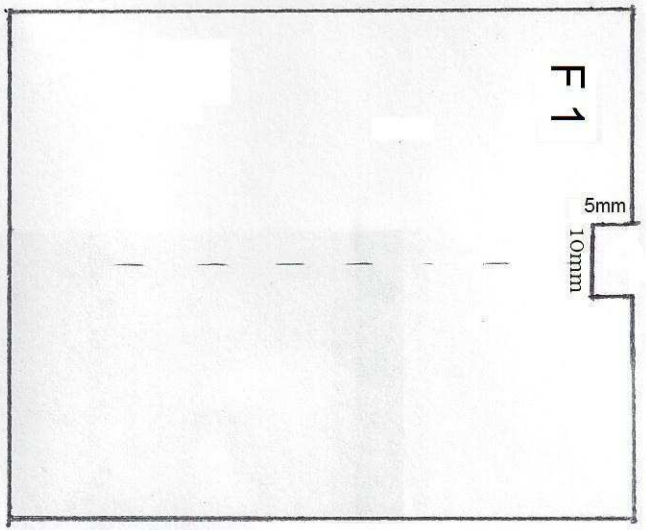
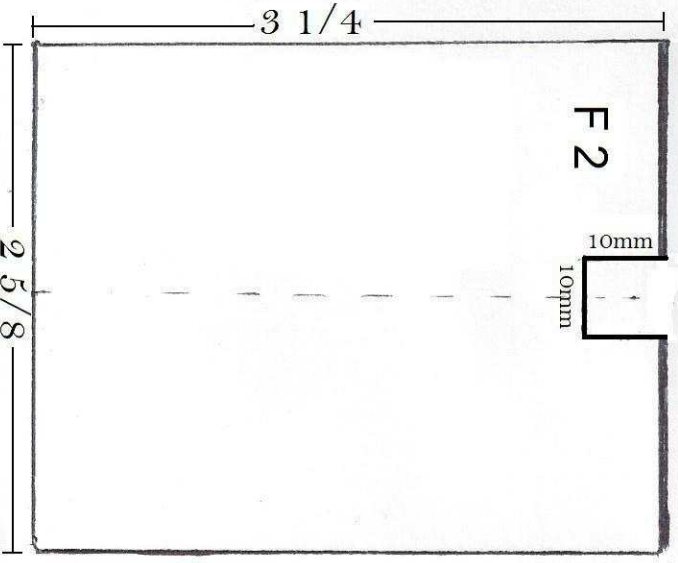
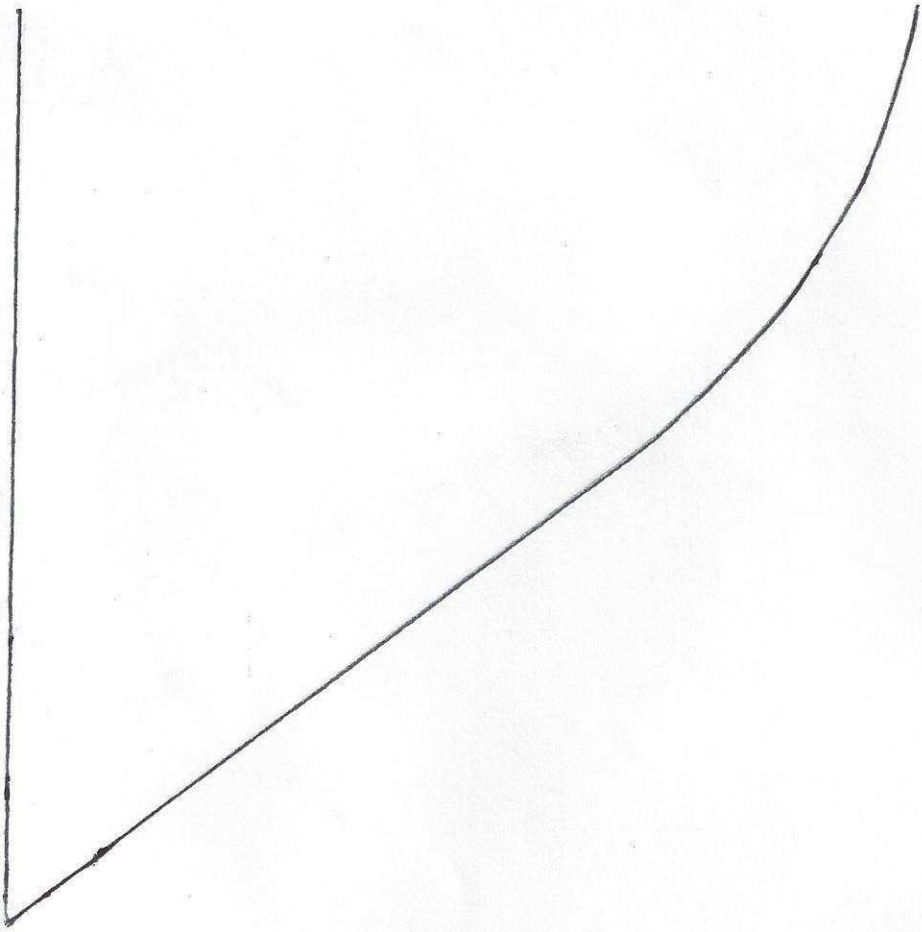
Fuselage top, front  
cut 1

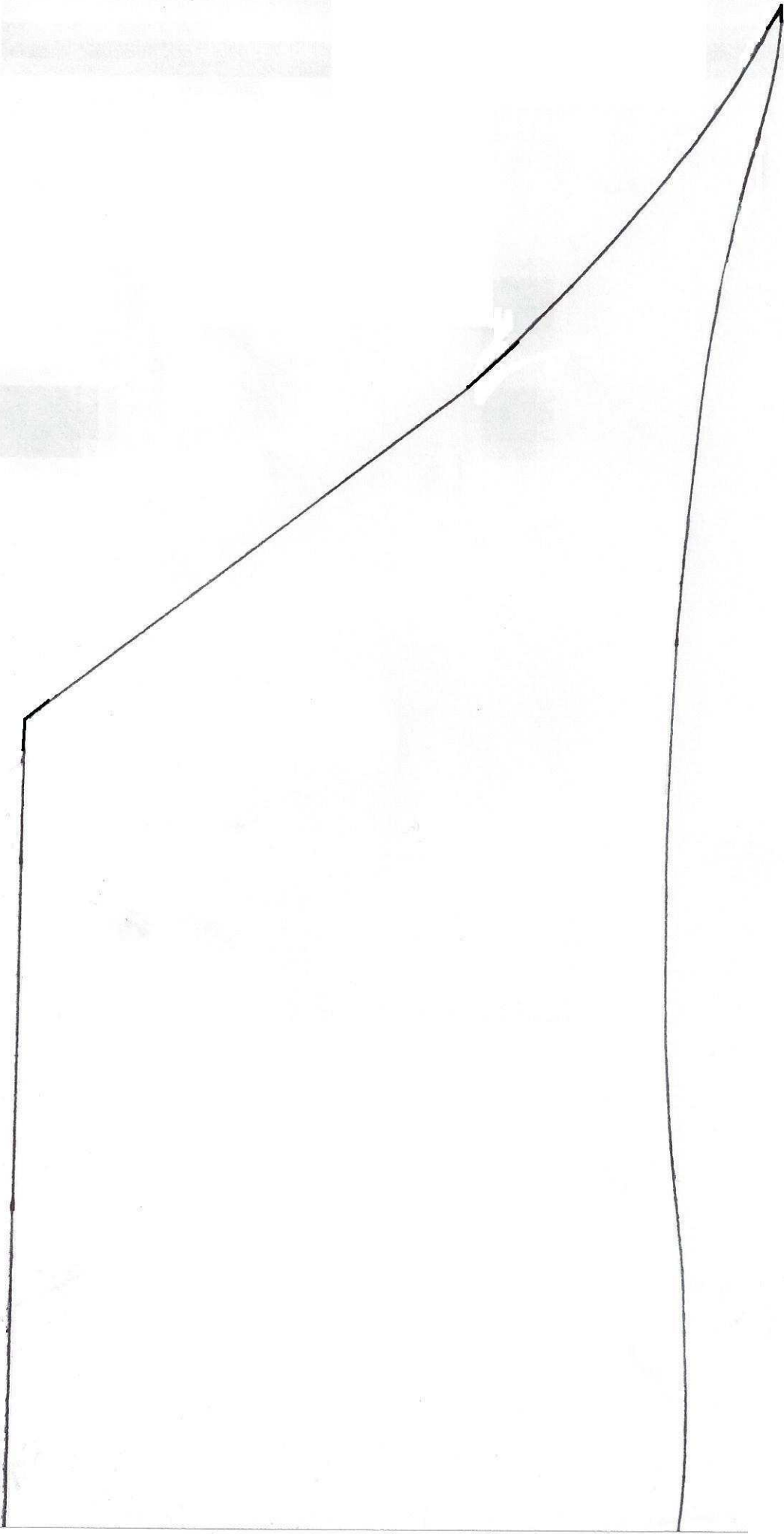




Float  
cut 2

Float bottom  
cut 2





$\frac{x}{x} \frac{x}{x} \frac{x}{x} \frac{x}{x} \frac{x}{x} \frac{x}{x}$   
F1

$\frac{x}{x} \frac{x}{x} \frac{x}{x} \frac{x}{x} \frac{x}{x} \frac{x}{x}$   
F2

CG